

# Work Sheet

## Five Little Fishes



elephanty

# Five Little Fishes



One, Two, Three, Four, Five  
Five little fishes swimming in the pond.  
One fish jumped and fell on the land.  
The Fishy can't swim or breathe nor move,  
Kiddy Tony goes and saves her life!

One, Two, Three, Four,  
Four little fishes swimming in the pond.  
One fish jumped and fell on the land.  
The Fishy can't swim or breathe nor move,  
Kiddy Tony goes and saves her life!

One, Two, Three,  
Three little fishes swimming in the pond.  
One fish jumped and fell on the land  
The Fishy can't swim or breathe nor move,  
Kiddy Tony goes and saves her life!

One, Two,  
Two little fishes swimming in the pond.  
One fish jumped and fell on the land.  
The Fishy can't swim or breathe nor move,  
Kiddy tony goes and saves her life

One ,  
One little fish swimming in the pond.  
The lil fish jumped and fell on the land.  
The Fishy can't swim or breathe nor move  
Kiddy Tony goes and saves her life!



# Five Little Fishes



## Find the words

T	R	E	K	G	N	P	L	E
I	M	B	W	R	T	M	R	W
H	S	P	H	O	B	G	A	C
R	W	A	F	L	J	U	M	P
S	I	D	N	Y	X	K	F	T
L	M	Y	F	I	S	H	E	S
O	P	T	A	H	C	O	G	Y
T	J	X	O	L	G	V	R	M
U	B	W	T	N	M	D	G	H
S	P	R	F	G	Y	E	A	N

1. JUMP
2. FISHES
3. SWIM
4. LOTUS

Answer on last page.

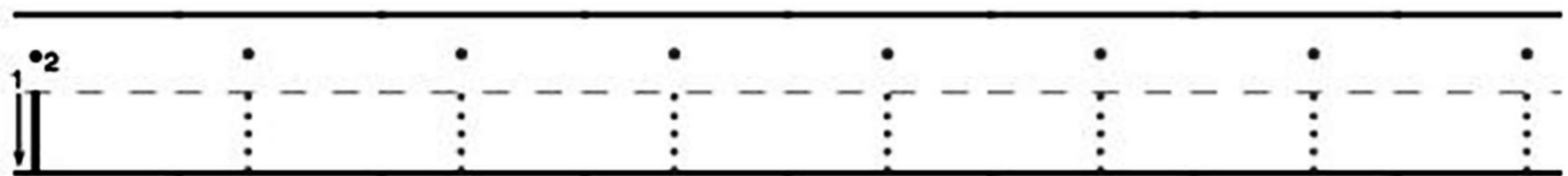
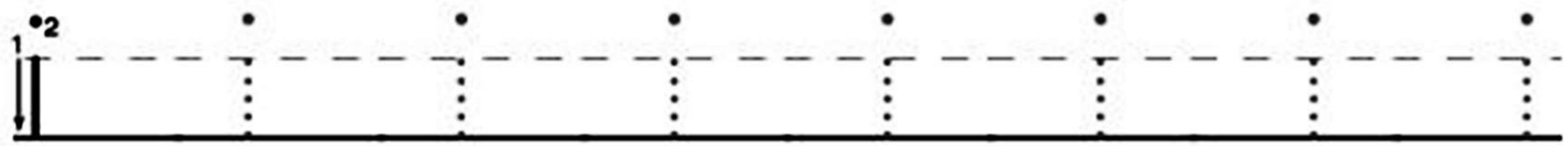
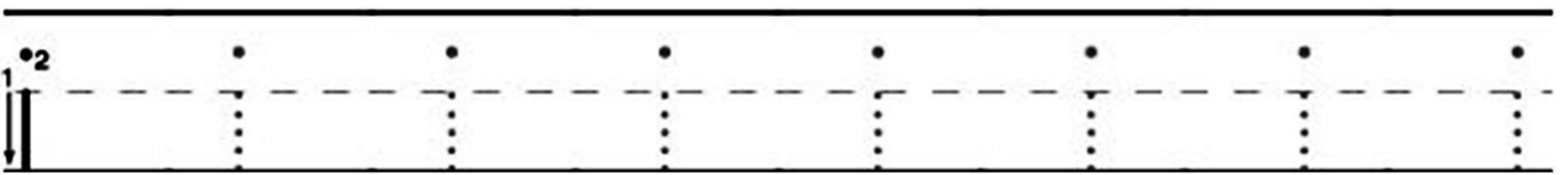
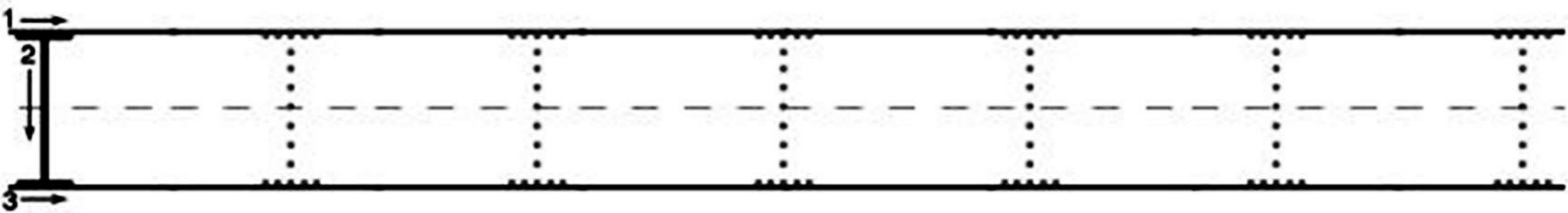
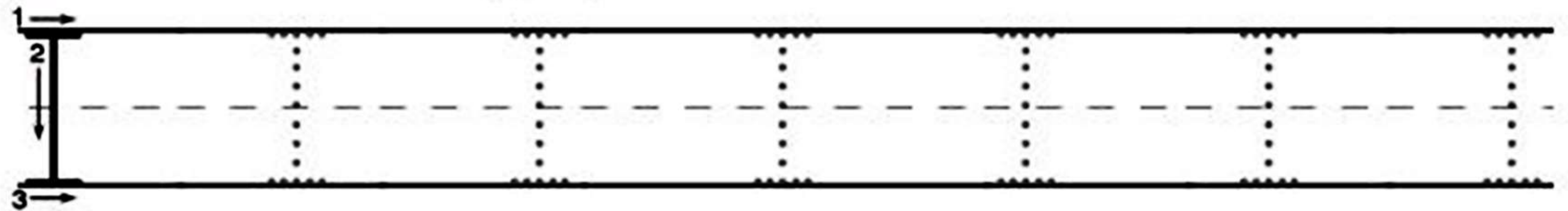
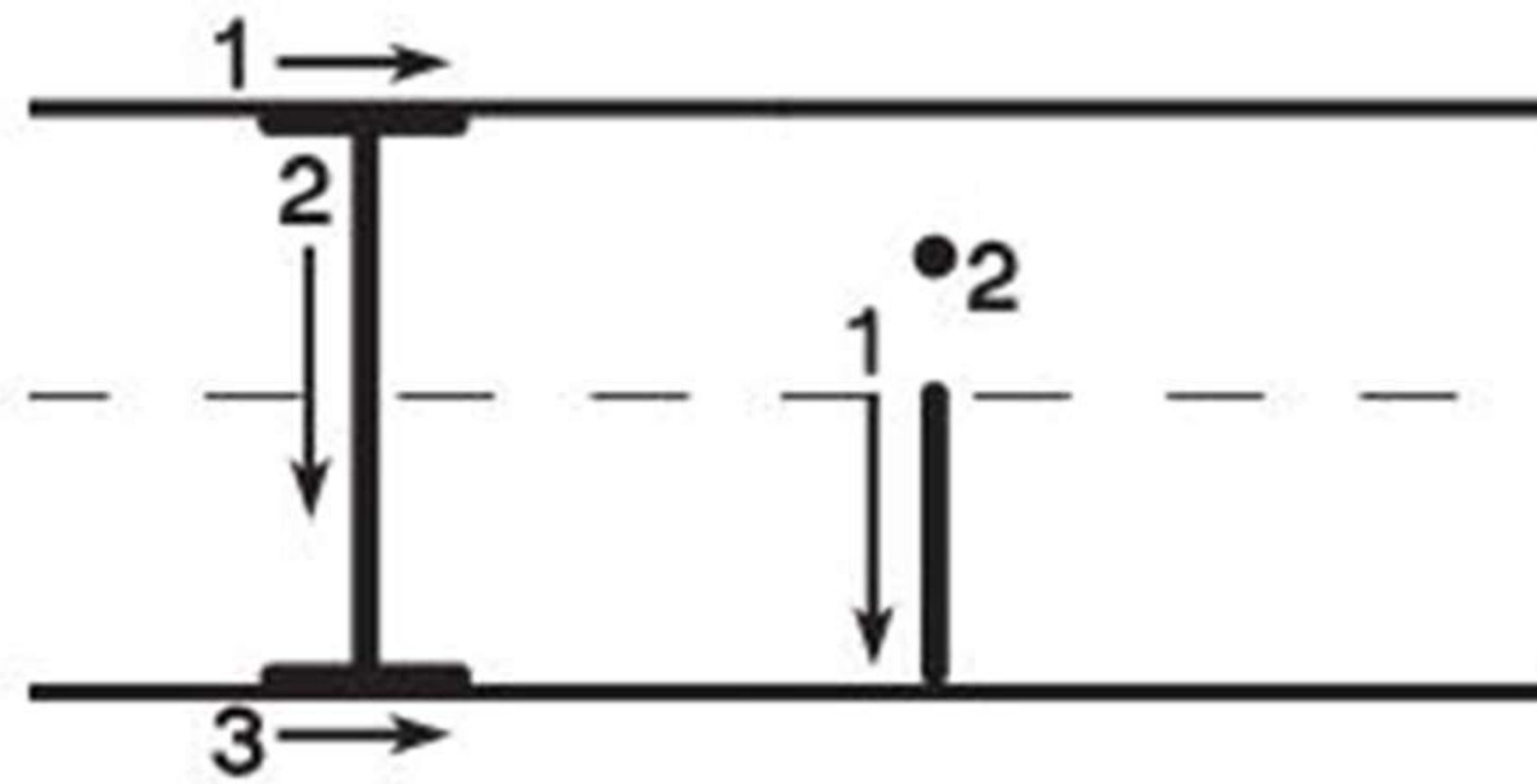


# Tracing ALphabet



Name: \_\_\_\_\_

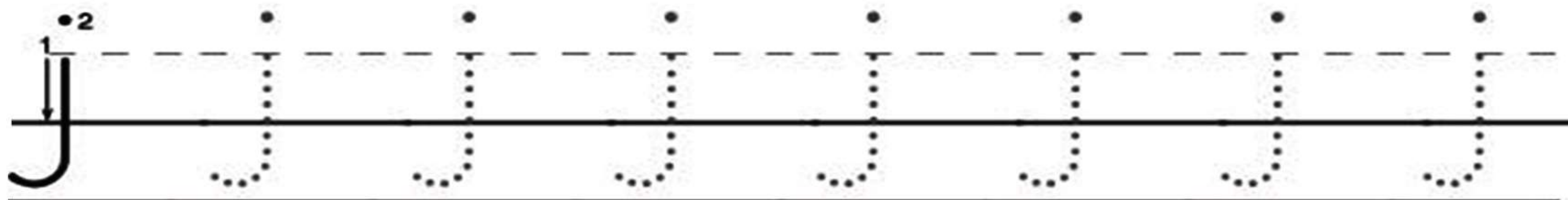
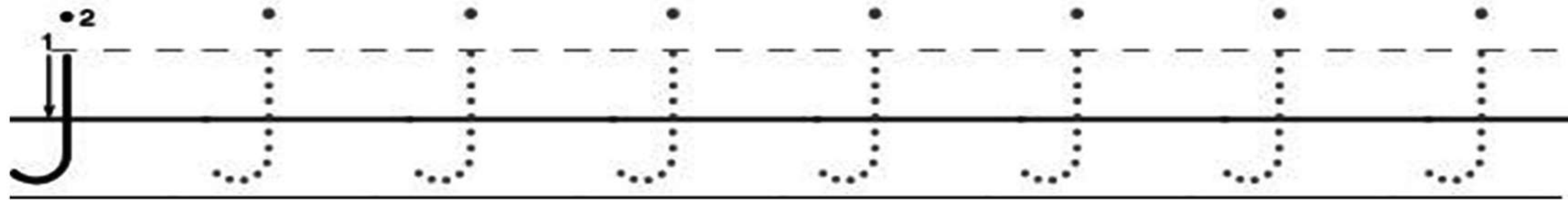
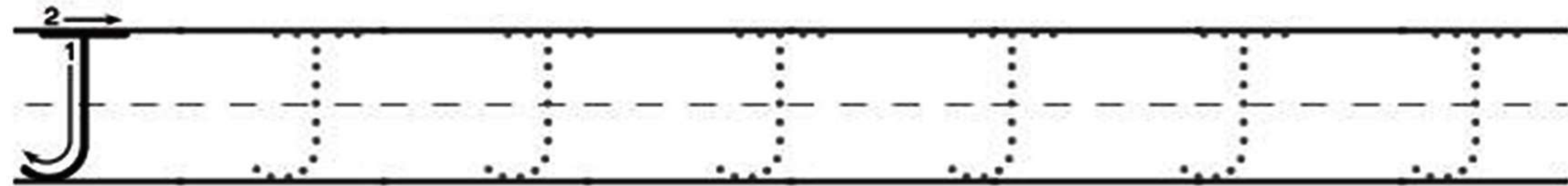
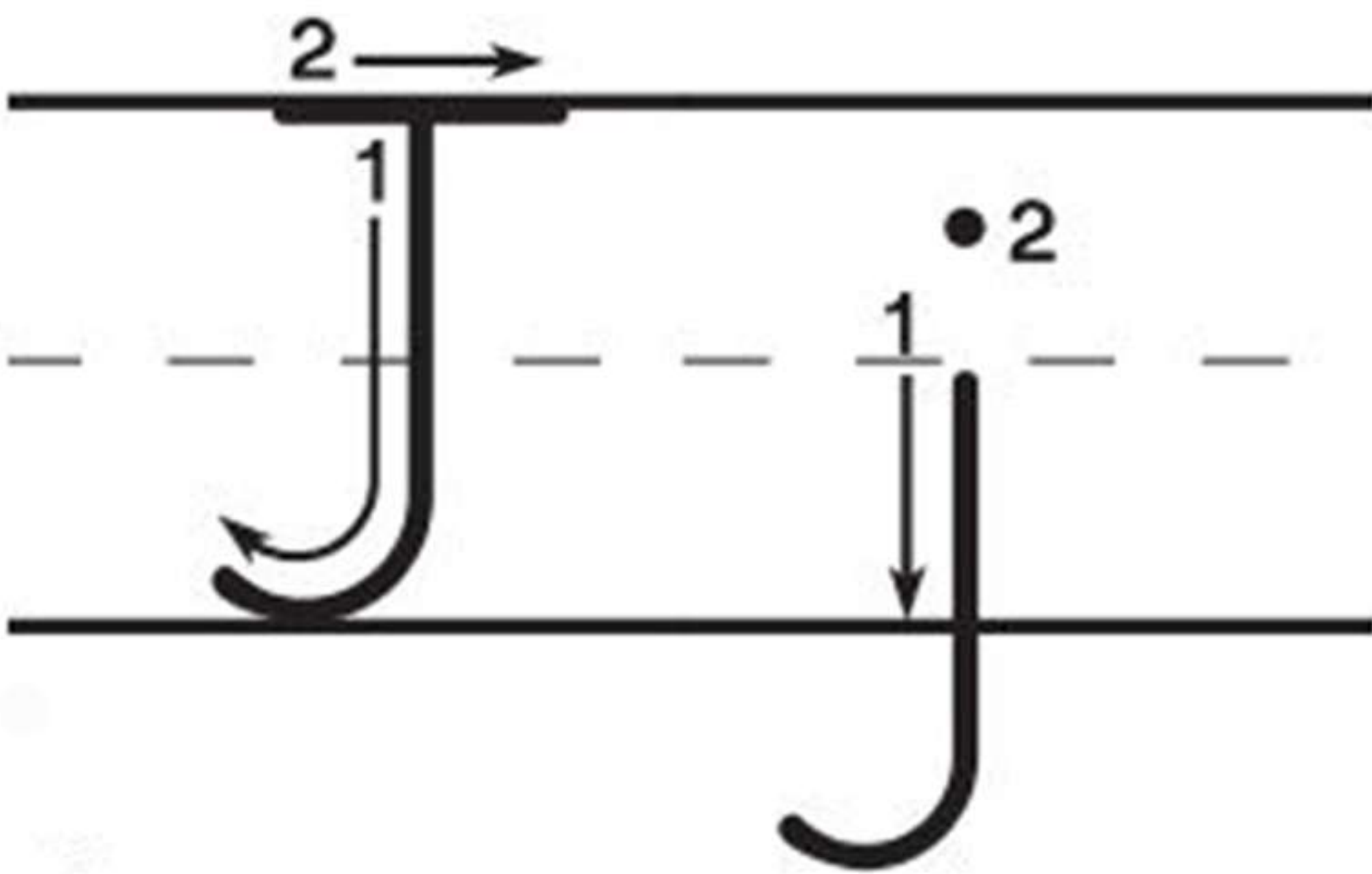
Date: \_\_\_\_\_



# Tracing ALphabet



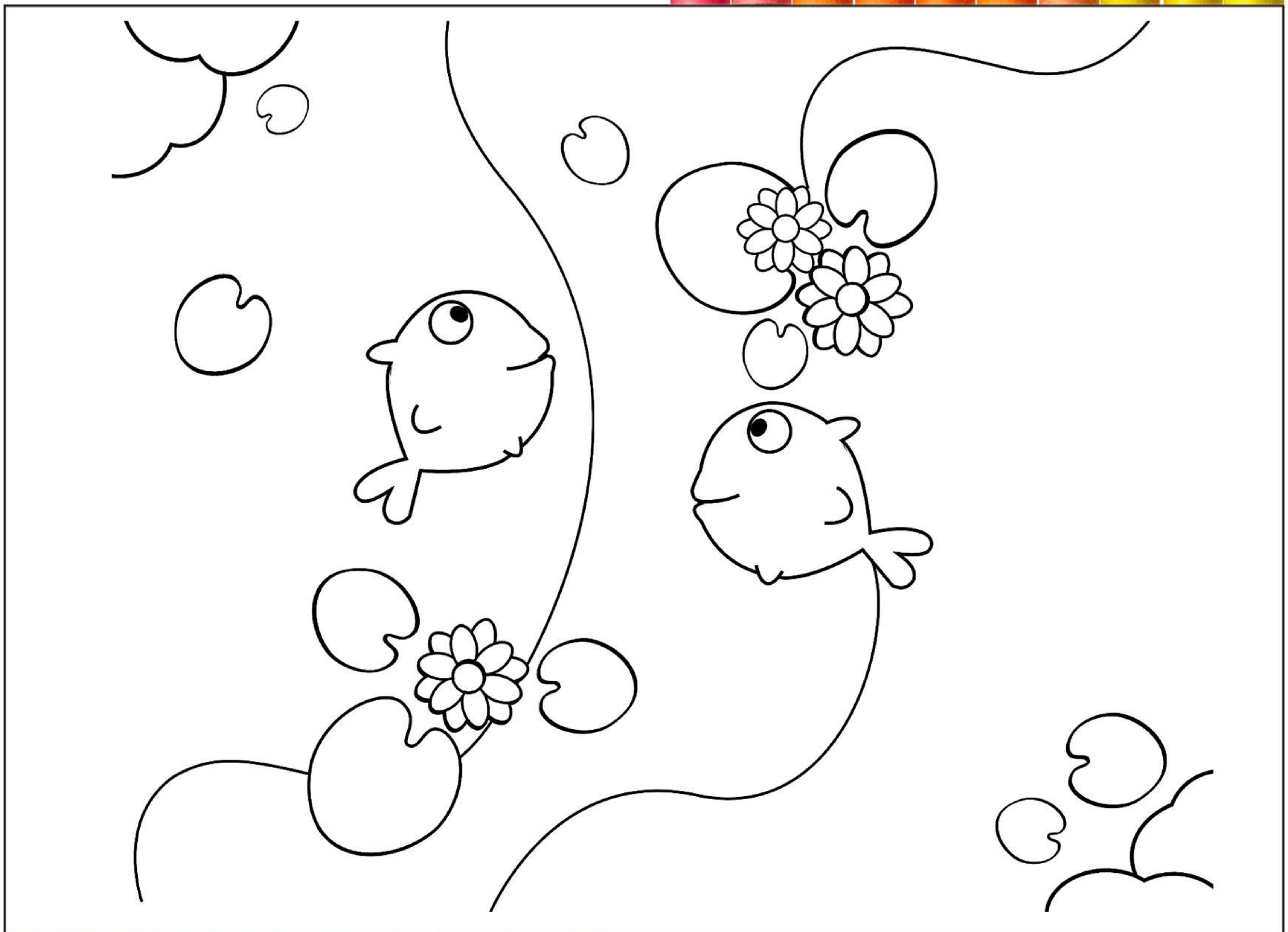
Name: \_\_\_\_\_ Date: \_\_\_\_\_



# Five Little Fishes



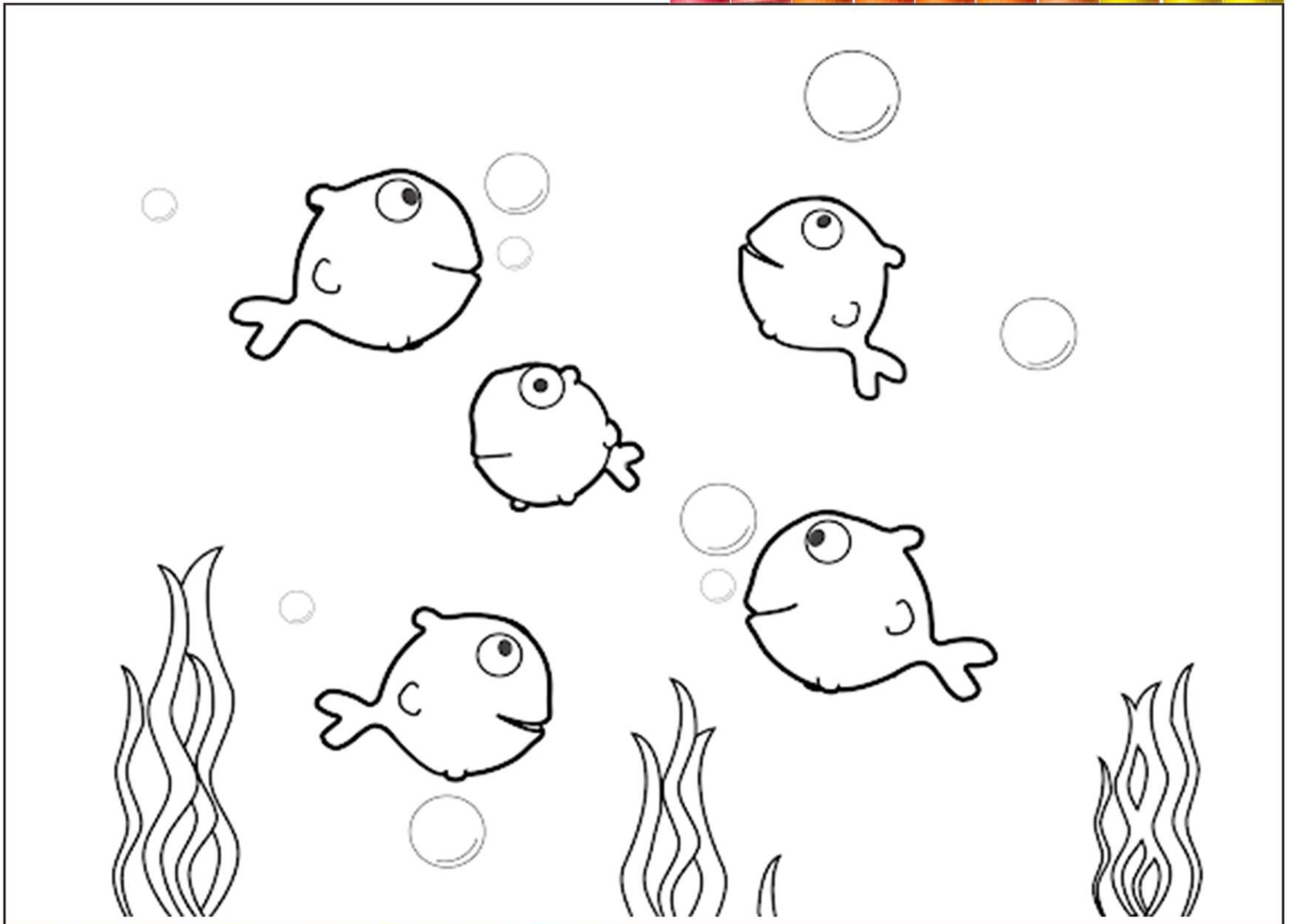
# Coloring Book



# Five Little Fishes



# Coloring Book

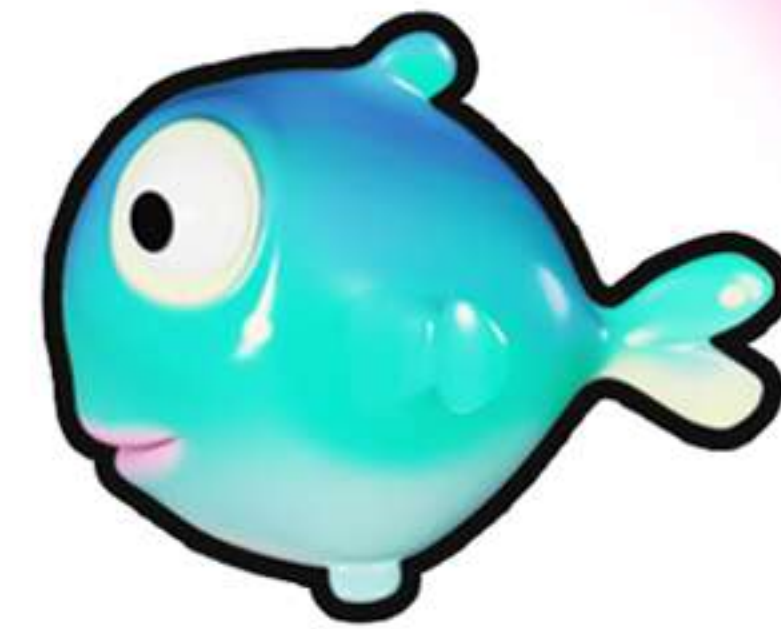


# Five Little Fishes

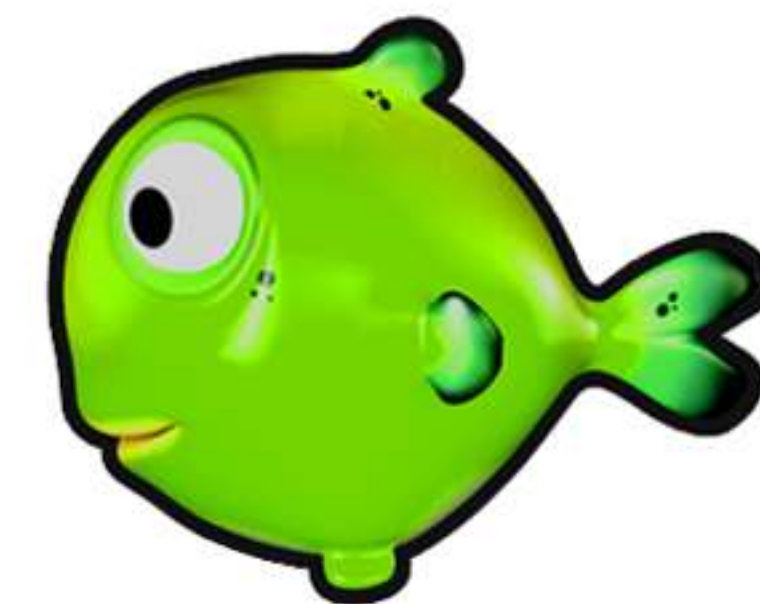


## Match the colors

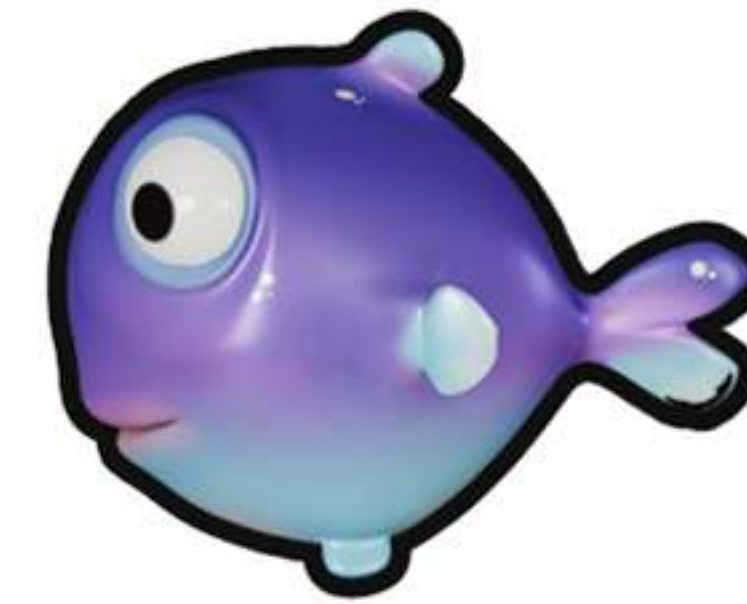
Green 



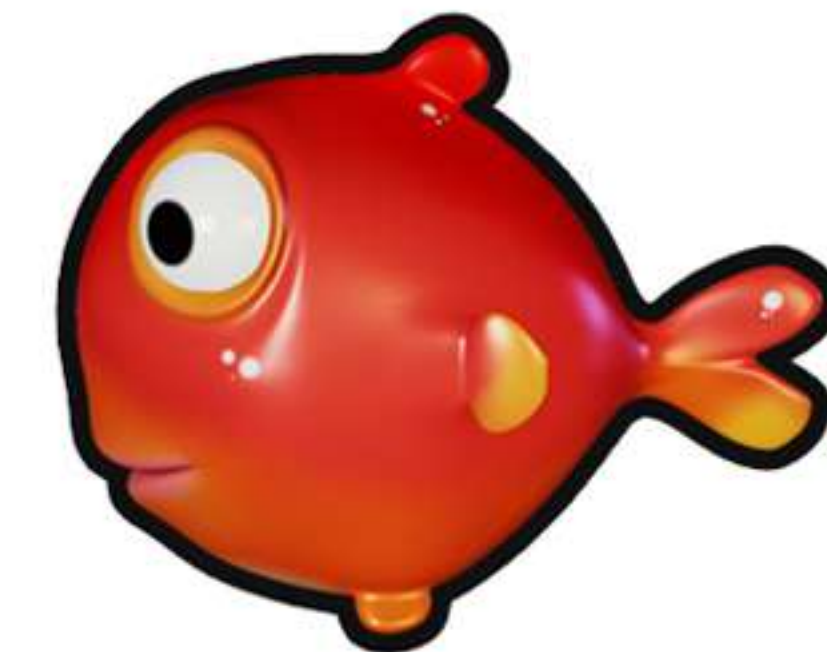
Red 



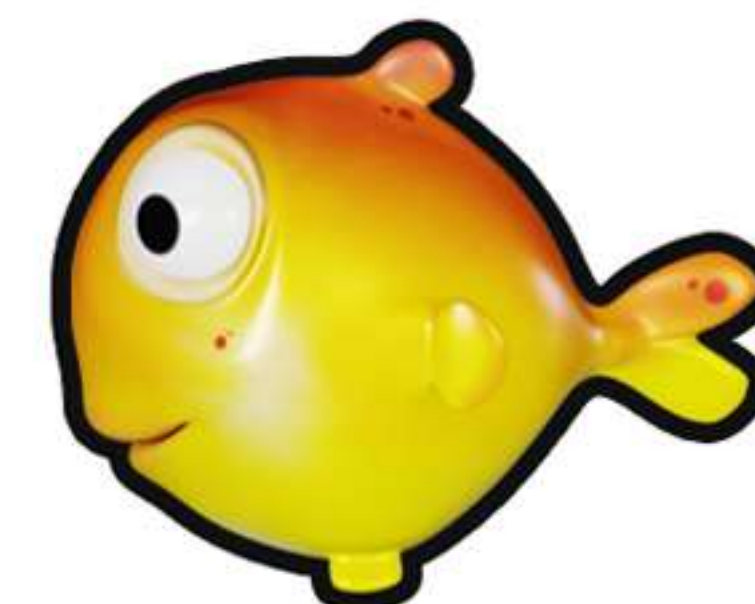
Blue 



Yellow 



Violet 



T	R	E	K	G	N	P	L	E
I	M	B	W	R	T	M	R	W
H	S	P	H	O	B	G	A	C
R	W	A	F	L	J	U	M	P
S	I	D	N	Y	X	K	F	T
L	M	Y	F	I	S	H	E	S
O	P	T	A	H	C	O	G	Y
T	J	X	O	L	G	V	R	M
U	B	W	T	N	M	D	G	H
S	P	R	F	G	Y	E	A	N